

Individual Group Control (IGC) 4N1 Motor Controller



Item #: 1811416

OVERVIEW:

The Individual Group Control (IGC) 4n1 Motor Controller provides individual and group control for up to four Somfy® Wired Technology (WT) motors with up to three intermediate positions per motor. Through the use of the DecoFlex Dry Contact Keypad (#1811402, required), users can access 3 preset positions as well as Up, Down and Stop. Keypads can also be used to set custom intermediate positions. Multiple IGC 4n1 Motor Controllers can be daisy-chained together for simplified synchronized control from a single keypad. The IGC 4n1 Motor Controller can not set upper and lower motor limits, but senses the current to identify them.



TECHNICAL SPECIFICATIONS:

- Line Voltage Input: 115V AC +/- 10%; 50 – 60Hz
- Low Voltage Output to Switches: 12V DC 185 mA maximum consumption
- Output to Motor: 115V AC (5A per motor) ¼ HP
- Fuses: 5x5A (1 for each motor, 1 for the board)
- Dimensions: H 12" x W 10" x D 4"
- Materials: Steel
- Mounting: On wall
- Shipping Weight: 10 Lbs.

FEATURES SUMMARY:

- Control up to four WT motors individually or in groups.
- Provides default intermediate positions of 25%, 50%, and 75% openness which can also be customized for each motor.
- Individual control and Master control using DecoFlex Dry Contact Keypads.
- Four Keypad ports and two Master ports.
- CSA/UL certified E160923.
- Plenum rated.

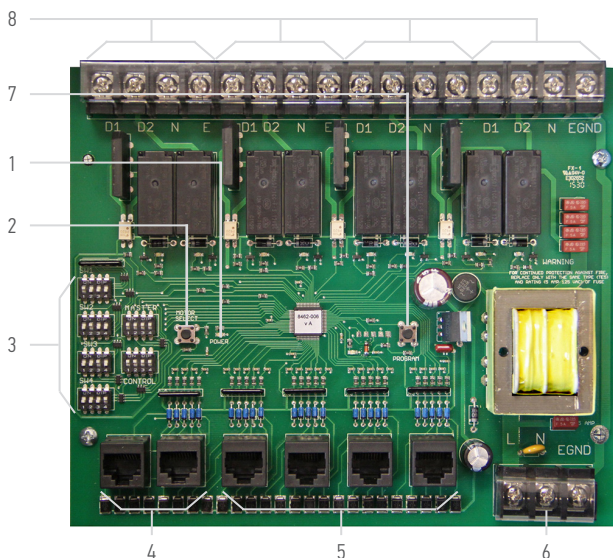
ACCESSORIES:

- DecoFlex Dry Contact Keypad (1811402), required
- IGC RTS Receiver (1811492)

COMPATIBLE WITH:

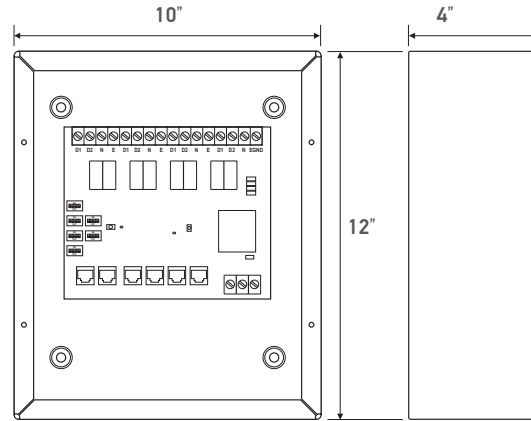
- AC wired motors: 400 series, 500 series and 600 series.

CONNECTIONS AND INDICATORS:



ELEMENT	FUNCTION
1 Power LED	Indicates power is on
2 Motor Selector Button	Sets Keypad group
3 Dip Switches	Motor selection
4 Master Ports	Connect Master Keypads and Daisy Chain Controllers
5 Individual Motor Key Ports	Connect Keypads for each group
6 To 110V AC	Connect to power
7 Program Button	Set intermediate positions
8 To Motors	Connect to motors

DIMENSIONS:



BEST WIRING PRACTICES

A standard category cable (CAT-5 or higher) terminated to T568B standard must be used. The diagram shown below is meant for illustrative purposes to show the connections from product to product. This device can be used in other configurations than shown below.

