

The heavy-duty commercial chain operated clutch mechanism allows precise positioning of the Roller Shade. The bi-directional clutch never needs adjustment. When the operator stops pulling on the bead chain, the clutch stops automatically, holding the shade in the exact position desired.

**Features:**

- 1/8"-Thick Steel Bracket
- Clutch Fixed to Installation Bracket
- Fascia Valance does not require a notch to drop through
- #10 Qualified Stainless Steel Bead Chain may be offset
- Idler End Bracket has a height-leveling adjustment
- Idler End Bracket has a ball bearing idler for quiet and ultra-smooth rotation
- Idler End Bracket available as wall or ceiling mount (must specify)
- Idler End Cap is spring-loaded and retractable for simple and easy installation
- Manufactured from PA6/glass fiber

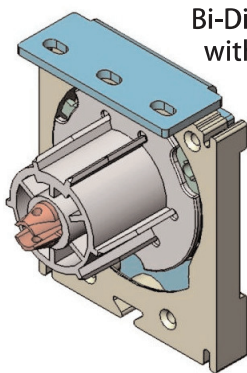
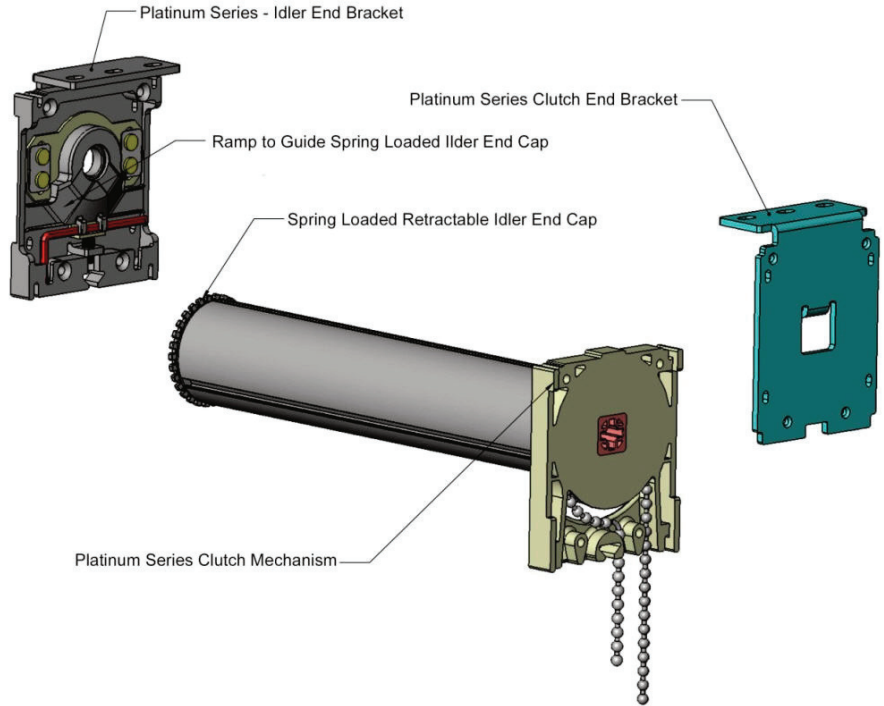
**Shade Dimensions:**

- Minimum Width — 8"
- Maximum Width — 108"
- Minimum Height — 8"
- Maximum Height — 144"

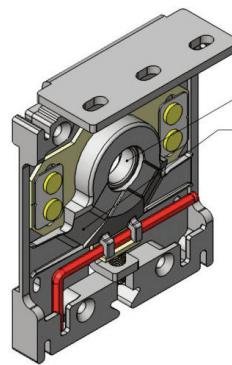
**Over-sized Shade Option:**

- 2 1/2" Steel Tube with Platinum Series Clutch and Spring Assist.

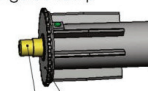
Maximum width: 162"  
 Maximum length: 108"



**Bi-Directional Clutch with Fixed Bracket**



**LEVEL CORRECT BRACKET™**



bearing  
 idle end shaft guide ramp  
 teathed rotate wheel  
 10mm shaft: spring loaded, retractable

**Bracket Dimensions:**

Ceiling Mount Installation  
 Projection 3"  
 Height 3 3/4"

Wall Mount Installation  
 Projection 3 1/4"  
 Height 3 3/4"

